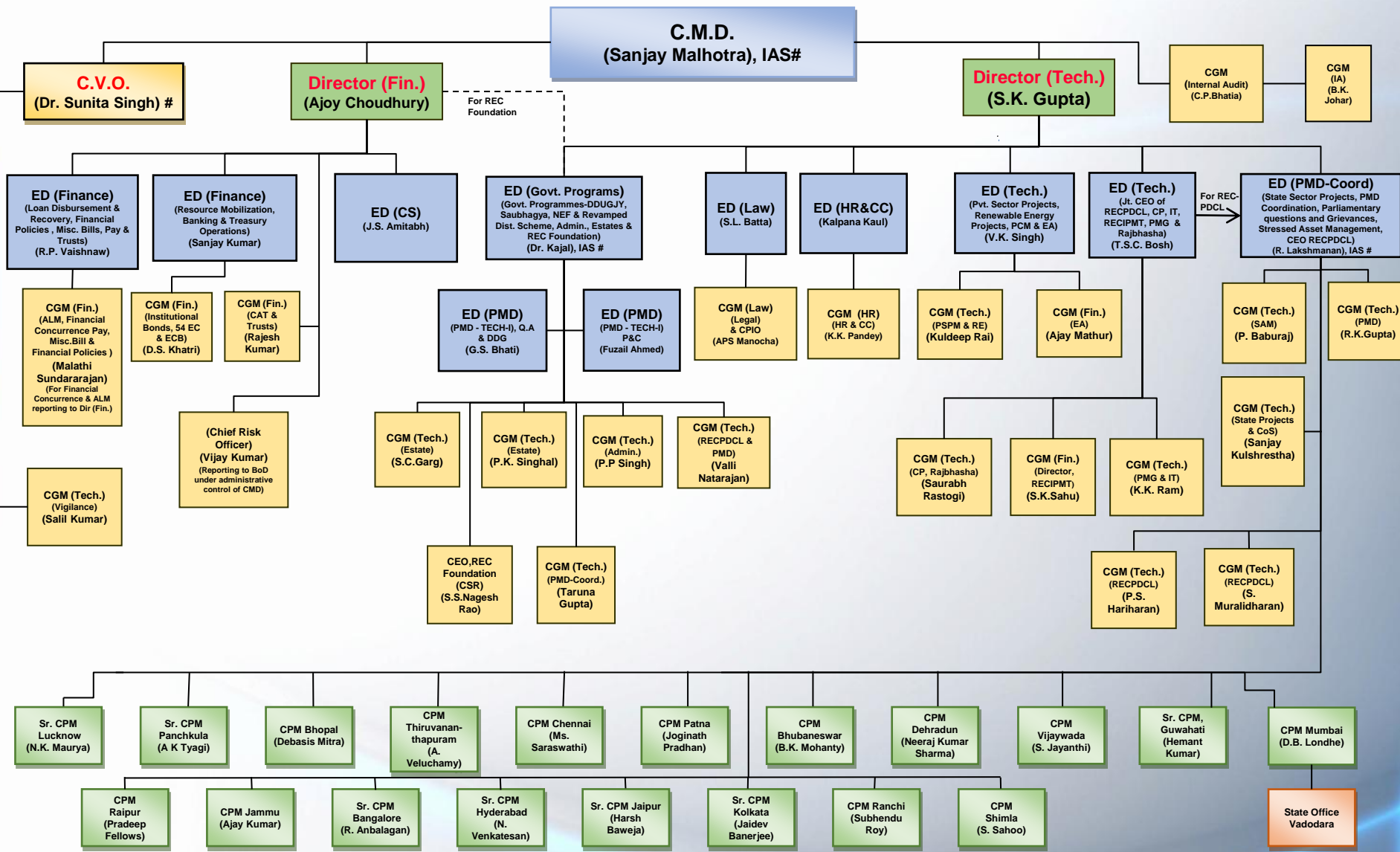


Organogram of REC Limited



Abbreviation

AA - Appellate Authority
ALM - Asset Liability Management
CAT - Corporate Accounts & Taxation
CC - Corporate Communication
CEO - Chief Executive Officer
CP - Corporate Planning
CS - Company Secretary
CSR - Corporate Social Responsibility
DDG - Decentralized Distributed Generation
EA - Entity Appraisal
ECB - External Commercial Borrowings
Fin - Finance
Gen - Generation
HR - Human Resources
HR - Human Resources
IA - Internal Audit
IAS - Indian Administrative Service
IT - Information Technology

Abbreviation

P&C
P&C - Parliament & Coordination
PCM - Procurement & Contract Management
PID - Public Information Division
PIO - Chief Public Information Officer
PMD - Project Management Division
PSPM - Private Sector Project Management
QA - Quality Assurance
RE - Renewable Energy
RECIPTM - REC Institute of Power Management and Training
RECPDCL - REC Power Distribution Company Ltd.
RECTPCL - REC Transmission Projects Company Ltd.
RM - Resource Mobilisation
RTI - Right to Information
SAM - Stressed Asset Management
SOP - State Operations
TA - Transparency Officer

Abbreviation

CMD - Chairman and Managing Director
CVO - Chief Vigilance Officer
ED - Executive Director
CGM - Chief General Manager
CPM - Chief Program Manager